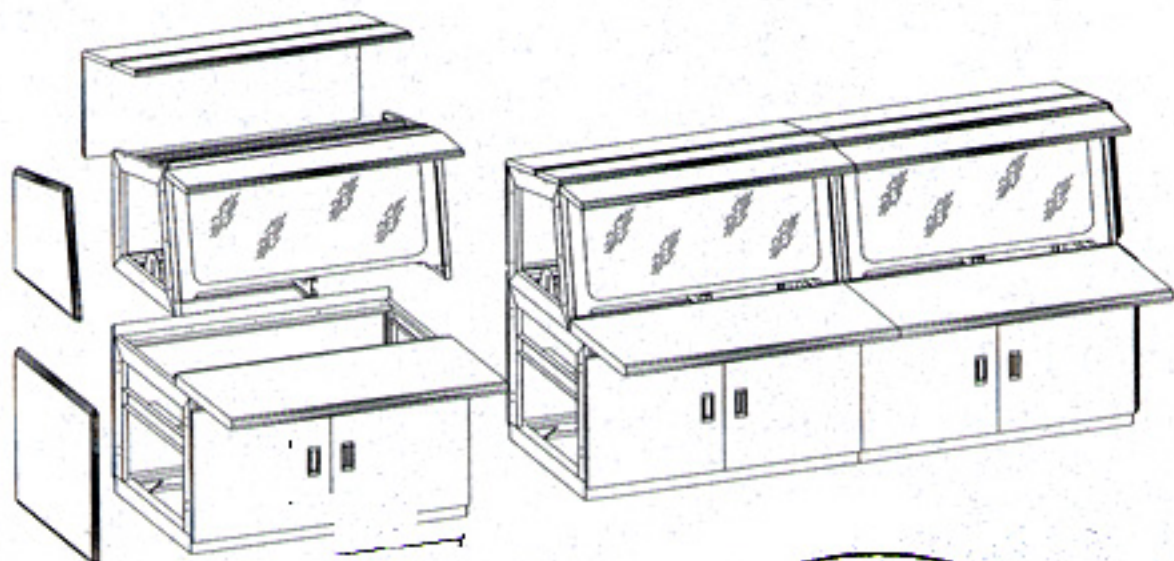
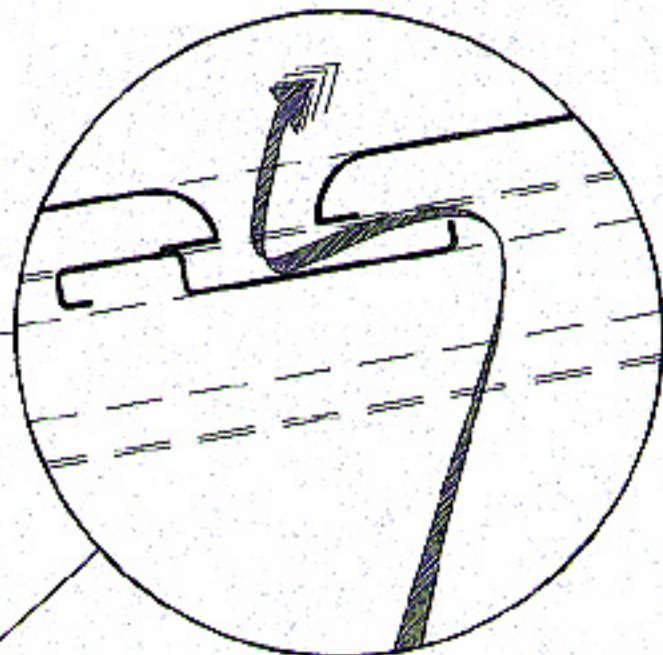




Two Stage Access Series



ACCESS SERIES EXCLUSIVE "SPILL PROOF" VENTILATION SYSTEM PROTECTS YOUR VALUABLE ELECTRONICS FROM HEAT AND CAPTURES ANY LIQUID THAT ACCIDENTALLY SPILLS ON TO THE TOP OF THE CONSOLE



SPILL PROOF VENTILATION SYSTEM

FULL RADIUS ACCESS PANELS

LIFT-OFF ACCESS PANEL

FULLY ADJUSTABLE CRT SUPPORT

FIRST AND SECOND STAGE
POWER STRIPS (TWO STRIPS)

LIFT-OFF ACCESS PANEL

LEVELING PAD IN EACH CORNER

CONTINUOUS DIRECTIONAL TASK LIGHT

FLIP-UP & RETRACTABLE ANTI-GLARE
& ANTI-RADIATION OPTICAL GLASS

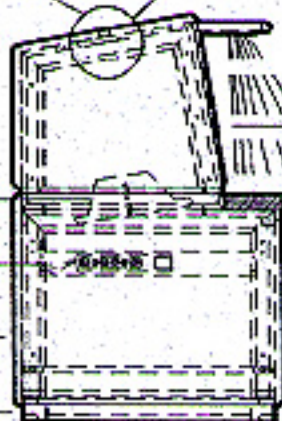
WORK SURFACE SUPPORTS
200 POUNDS PER LINEAR FOOT

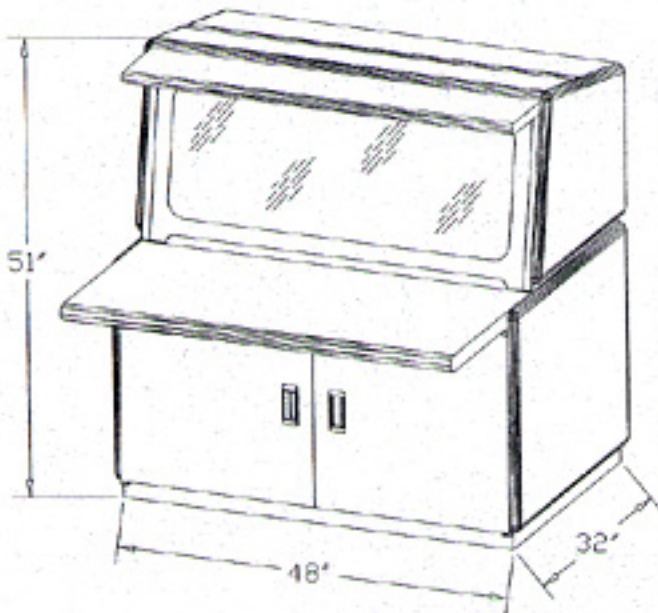
STANDARD LIFT-OFF ACCESS PANEL

OPTIONAL HINGED DOORS

OPTIONAL SLIDE OUT CPU TRAY

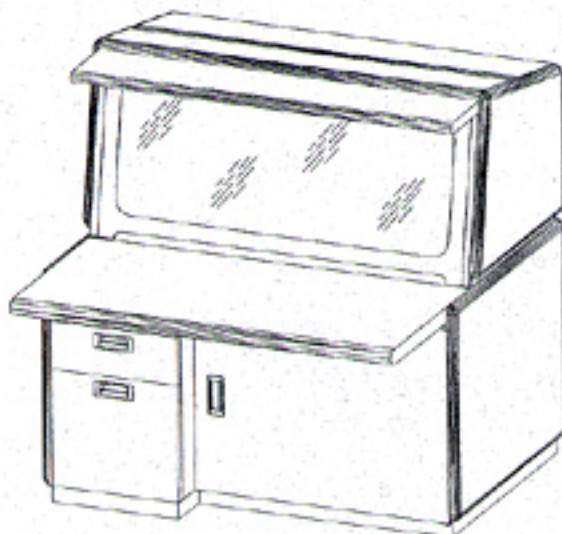
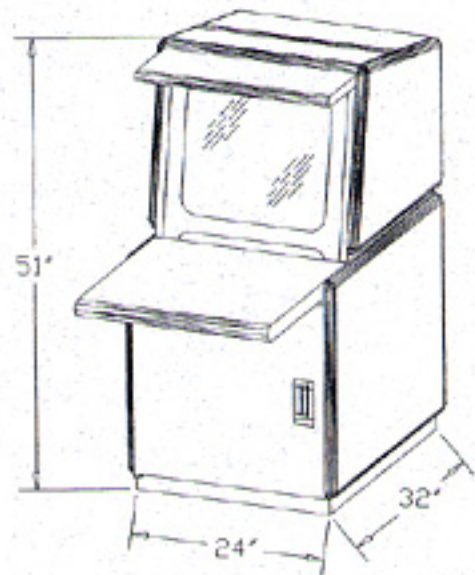
11 GAUGE STEEL BASE FRAME





-
- Model:** 48" Two Stage Access Series
Model No: DVA-1048
Capacity: (4) CPU's, (2) 21" CRT's
Features: 48" wide x 24" deep work surface
Continuous directional task light
Lift-off access panels front and rear
Spill Proof Ventilation System
Two Fully Adjustable Monitor Supports
Two 6 receptacle power strips
Finish: Cover Panels, Dove Gray
Work Surface, Gray Nebula
(Custom colors available)
-

-
- Model:** 24" Two Stage Access Series
Model No: DVA-1024
Capacity: (2) CPU's, (1) 21" CRT's
Features: 24" wide x 24" deep work surface
Continuous directional task light
Lift-off access panels front and rear
Spill Proof Ventilation System
Two Fully Adjustable Monitor Supports
One 6 receptacle power strips
Finish: Cover Panels, Dove Gray
Work Surface, Gray Nebula
(Custom colors available)
-



-
- Model:** 48" Two Stage Access Series
Model No: DVA-1048
This unit is shown with an optional Hinged Door and Extended File Drawer Pedestal. Other options include Flush Mount Pedestals, Slide Out CPU Trays, Front and Rear Storage Bins, 18" Rack Mount, Forced Ventilation, Book and Binder Bins, Fully Adjustable CRT Support, and Slide Out Key Board Trays. For a full list of options, please see the Options section of this catalog.
-